



Rack Cooling Unit

Cooling Your Server

- ▶ All-in-one rack cooling system integrated air conditioner, UPS, battery, PDU and real-time monitoring software
- ▶ Plug and Play. Easy and rapid deployment
- ▶ Sealed cabinet design for sustainable cooling and noise reduction
- ▶ R410A refrigerant for environmental protection
- ▶ Auto-adjust cooling capacity from 900W to 3500W
- ▶ Air conditioner with DC inverter design for high efficiency operation

Target Applications and Industries

- IT Server Room
- Insurance/Banking
- Telecommunications
- Internet of Things
- Education
- Small Enterprise
- Edge of cloud computing
- Security
- Retail



System Outlook

Security & Accessories

- Smoke detector
- LED lighting
- Environmental monitoring device



Cabinet

- 42U x 600 x 1200 mm
- Sealed design
- Surface painting for anti-rust, water-proof and anti-corrosion
- Removable side panel

Switch Panel

- 3U
- Integrated all switches for input, output, manual bypass and PDU



UPS

- 2U/3U
- Alternative UPS is available



Air Conditioner

- 5U
- 3.5KW cooling capacity
- R410 refrigerant
- DC inverter design
- Redundant cooling fan



Front View (Open)



Front View (Closed)

Emergency cooling fan

HMI Display

- 10" touch LCD screen
- UPS status monitoring & management
- Temperature & humidity monitoring



Anti-fog double glass

Power Distribution Unit

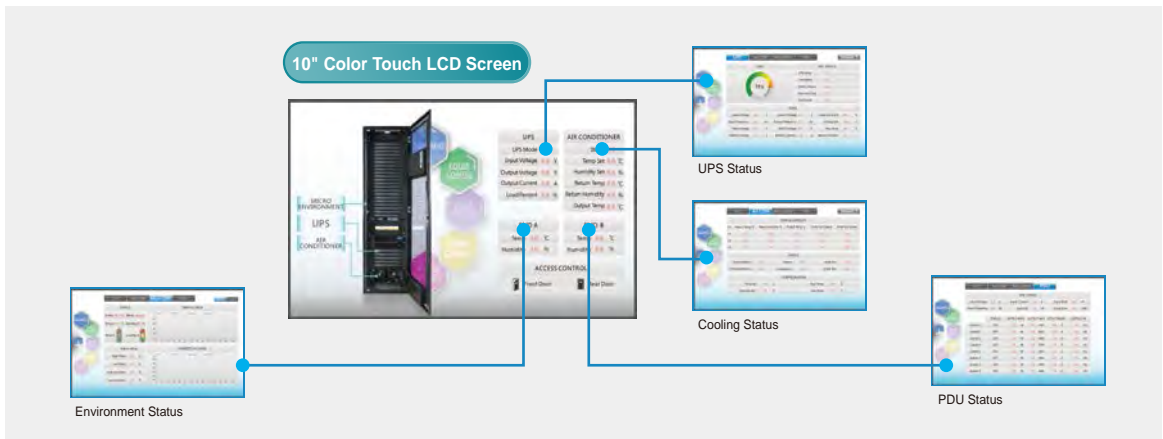
- 0U with C13 x 15
- Vertically on the back of the chassis



Emergency cooling fan

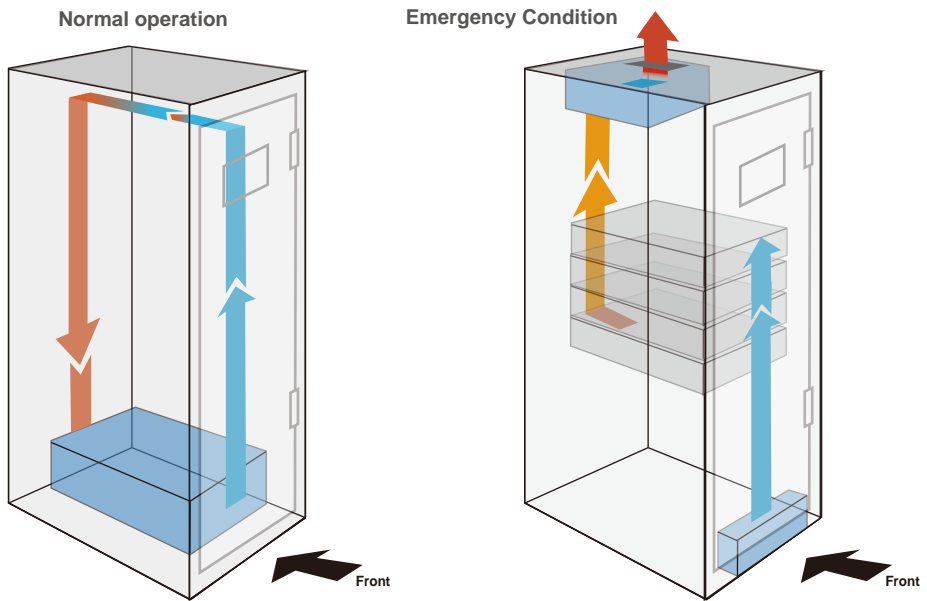


Monitoring Software



Cooling System

Cooling ventilation system



Optional Accessories



Integrated Camera on LCD panel



Magnetic door locker



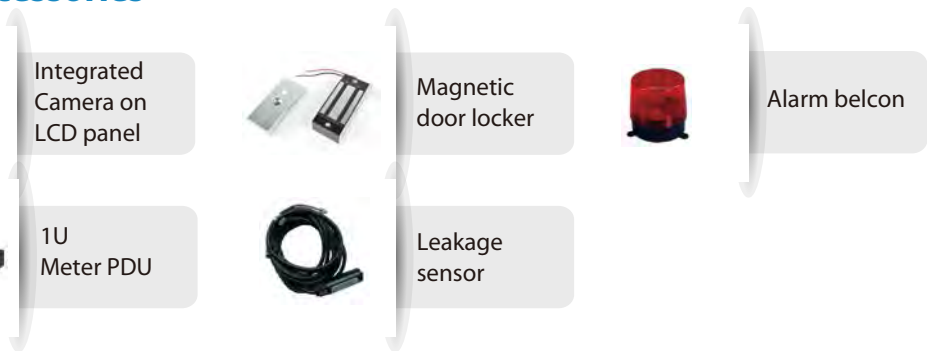
Alarm belcon



1U Meter PDU



Leakage sensor



Technical Specification:

AIR CONDITIONER		
Maximum Cooling Capacity	3.5KW (Adjustable, 900W ~ 3500W)	
Power Supply	220V/50Hz Single Phase	
Air Flow	≥ 700CHM	
Dimension, D x W x H (mm)	740 x 438 x 222 (5U) for In-Rack Unit	
	285 x 763 x 285 for External Compressor	
Refrigerant Type	R410A	
Design Lifetime	10 Years	
Operation Environment	Humidity	0 ~ 90% Relative Humidity
	Temperature	-15~45°C
PDU		
Standard	PDU with IEC C13 x 15	
Optional	1U meter type PDY for 8 controllable outlets	
Switches Box	3U with MCBs for Main Power / UPS / AC / Manual Bypass / Light and SPD	
MONITORING		
Display	10" Colour Touch LCD	
Standard Accessory	Temperature / Humidity / Smoke Sensor / LED Lighting	
Optional Accessory	Integrated Camera / Magnetic Door Locker / Leakage Sensor / Alarm Belcon	
CABINET		
Dimension, D x W x H (mm)	1200 x 600 x 2000 [42U]	
Bearing Load (kgs)	1500	
IP Rating	IP40, with Ventilation Fan Holes on the Cabinet Top Side	

*Specification subjects to change without prior notice